

ARTICULATED TRUCK MOUNTED PLATFORM SPECIFICATION

CTEZED 26 J

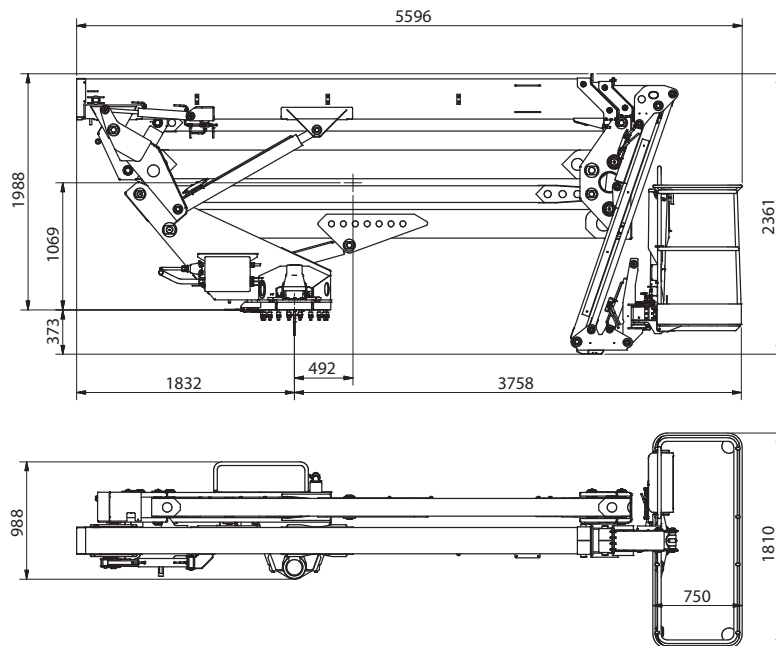
TECHNICAL DATA

- Double pantograph + telescopic boom (main boom + two extensions) + jib
- 360° continuous turret rotation on bearing turntable
- Proportional, electrohydraulic controls in basket and ground
- Engine start and stop controls from basket and ground
- Aluminium basket
- 60° right + 60° left hydraulic basket rotation
- Hydraulically actioned basket levelling
- Nr. 4 hydraulic outriggers HS+HS/straight down type
- Electric system 12V or 24V
- Emergency manual pump
- 230V AC electrical socket in the basket
- Standard boom colours: blue (RAL 5017) or white (RAL 9010)
- Hour meter

AVAILABLE OPTIONS

- Basket in VTR fiberglass
- 24V working light

DIMENSIONS



CTE S.p.A.

Headquarter 7 Via Caproni - Rovereto (TN) IT, 38068

Ph. +39 0464 48.50.50 - info@ctelift.com - www.ctelift.com

Factory 5 Loc. Terramatta - Rivoli Veronese (VR) IT, 37010

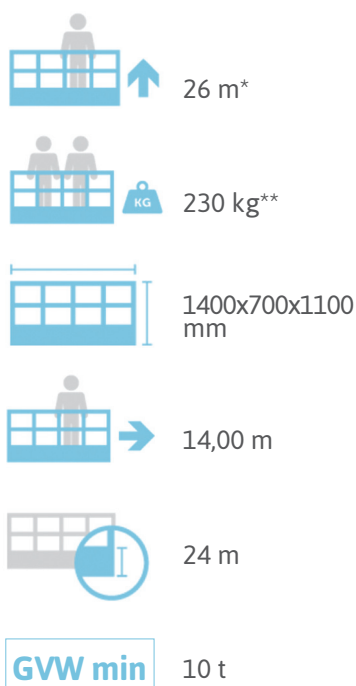
2 Via E. Fermi - Affi (VR) IT, 37010

CTE UK Ltd Enderby Leicestershire - UK

ARTICULATED TRUCK MOUNTED PLATFORM SPECIFICATION

CTEZED 26 J

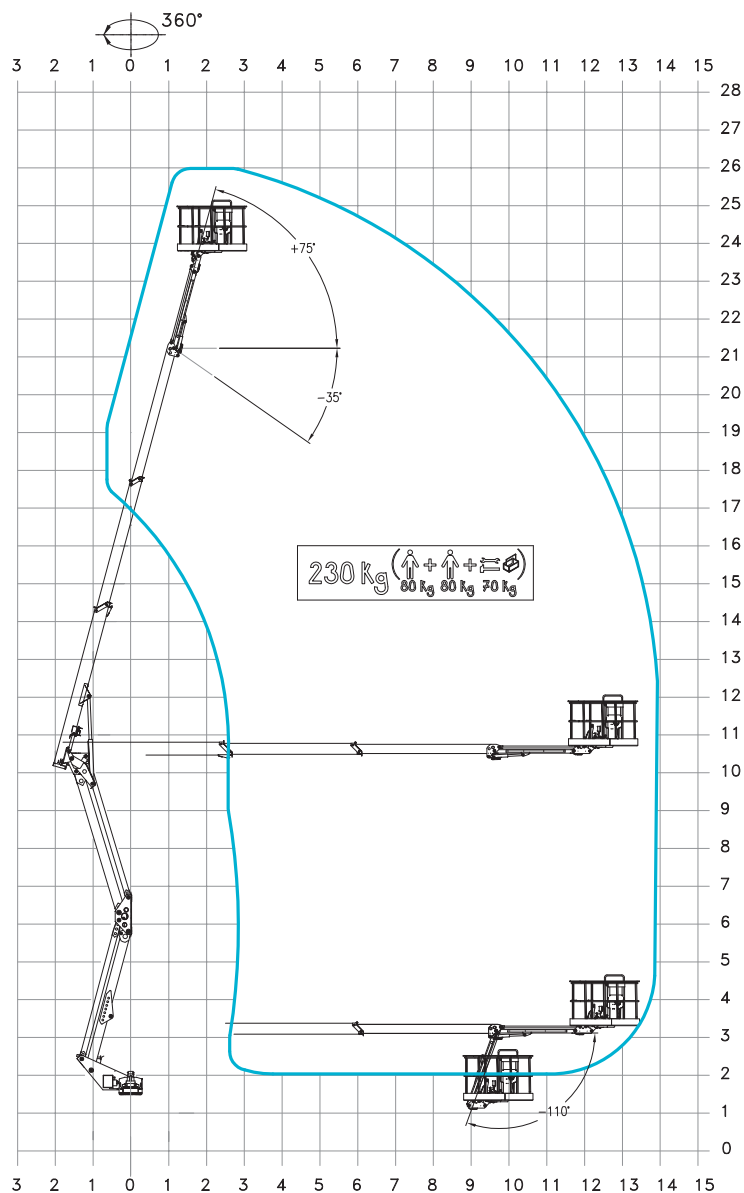
PERFORMANCE



* outreach and height max values and repeatability can change within $\pm 3\%$ due to manufacturing variation and working condition.

** 200 kg with fiberglass basket

WORKING ENVELOPE



Product specifications are subject to change without notice or obligation. Technical features and drawings in this brochure are for illustrative purposes only. _ZED 26 J - ed. 04/22



CTE S.p.A.

Headquarter 7 Via Caproni - Rovereto (TN) IT, 38068
Ph. +39 0464 48.50.50 - info@ctelift.com - www.ctelift.com
Factory 5 Loc. Terramatta - Rivoli Veronese (VR) IT, 37010
 2 Via E. Fermi - Affi (VR) IT, 37010

CTE UK Ltd Enderby Leicestershire - UK

