

CTETRACCESS 200

↑ 66 ft

→ 28 ft

👤 550 lb

The ideal
for rental
companies.

Easy to maintain.
Easy to use.
Easy to handle.



CTE TRACCESS 200

66 ft of working height, an impressive outreach of 28 ft with 550 lb of basket capacity.



Unrestricted working area



Absolute verticality with one command



550 lb impressive basket capacity



Different power sources available

TECHNICAL DATA

- » Articulated boom (two elements) + telescopic boom (main boom + 1 extension) + jib
- » Sigma boom moved by connecting rods
- » 320° turret rotation
- » Proportional electrohydraulic controls in basket
- » Engine start and stop controls from basket
- » All aluminium basket 4'7" x 2'3" x 3'7" ft
- » 90° right + 90° left hydraulic basket rotation
- » Hydraulic basket levelling
- » Dual drive speed
- » Extendible track width
- » 12V electric system
- » 9.51 gal hydraulic oil tank
- » Load cell
- » N° 4 hydraulic outriggers
- » with ground pressure sensors
- » Hour meter
- » 110 V AC EC electrical socket in the basket
- » Standard boom colours
- » blue (RAL 5017) or white (RAL 9003)
- » Max gradeability 25%
- » Max drive speed 1 mph
- » 110 V 1,5 Kw auxiliary engine



watch the video

STRENX™
PERFORMANCE STEEL



ENGINES

- » Honda 15 Hp petrol engine
- » Kubota diesel engine



ALUMINUM BASKET WITH LADDER



CABLE PUSHBUTTON

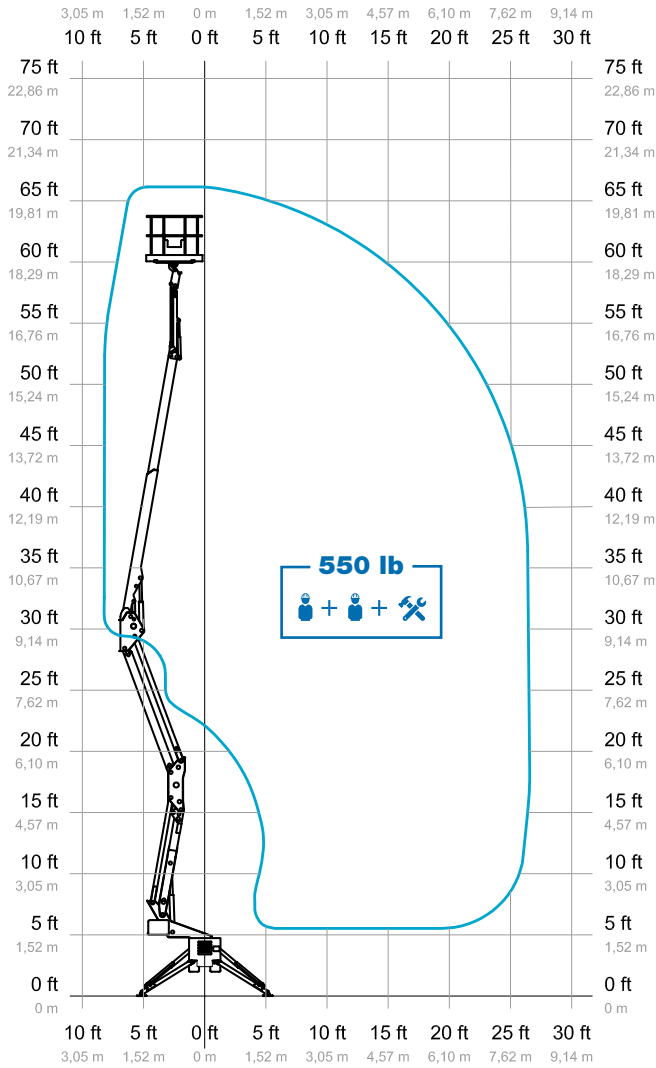


EXPANDABLE TRACK



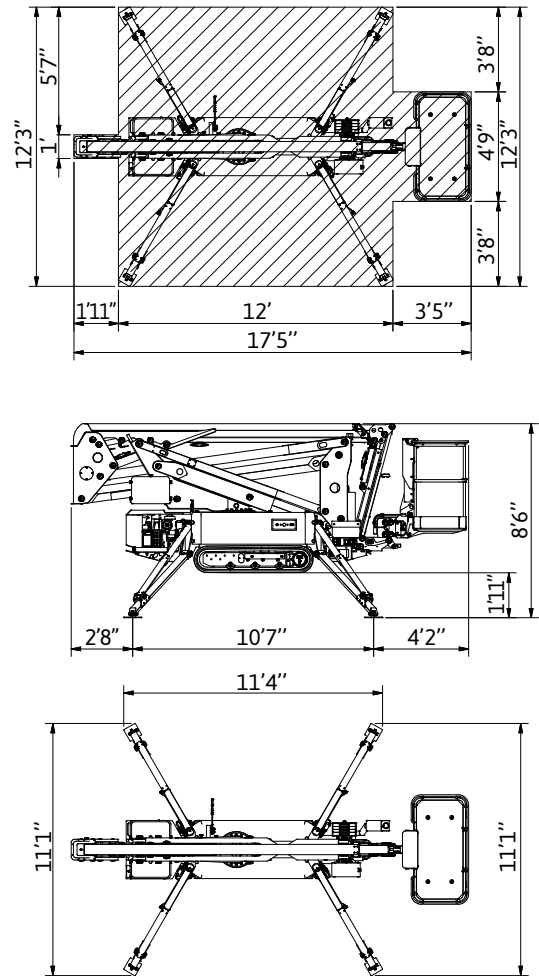
EQUIPPED WITH JIB

WORKING ENVELOPE

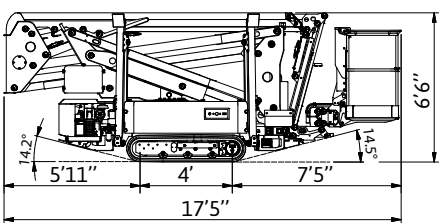


OUTRIGGER FOOTPRINT

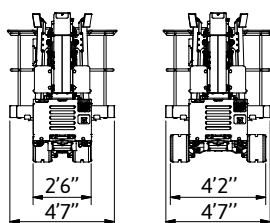
Live loads N/m²



DIMENSIONS



EXTENDED TRACK

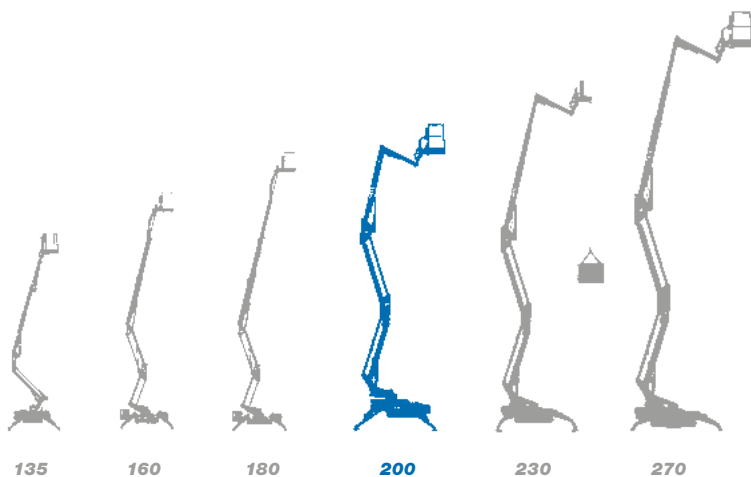


- 66* ft** **4'7" x 2'3" x 3'7" ft**
- 28* ft** **6133 lb**
- 550 lb** **59 ft**

* outreach and height max values and repeatability can change within ± 3% due to manufacturing variation and working condition.



Track-mounted range from 42 ft to 88 ft



- ★ Most versatile boom configuration
- ★ Most compact machines in class
- ★ Clean top boom
- ★ Friendly to use intuitive controls
- ★ Easy maintenance
- ★ Excellent boom rigidity during operation
- ★ Versatility of engines and versions



We are CTE, one of the largest european groups in the field of lifting people and handling of material.



After sales assistance



Service spare parts



Scheduled maintenance



On-site assistance



Authorized workshops

Efficient services, innovative technical solutions, timely assistance, professional advice and training: 'Work Becomes Easy' is all this. A style, a philosophy at the heart of which are our customers, their safety, their quality of life. For this reason there is a group in CTE united by ideas, motivation and passion to simplify the work of companies active in the lifting of people and objects.



CTE s.p.a.
Via Caproni, 7
38068 Rovereto (TN)

Factory
Loc. Terramatta, 5
37010 Rivoli Veronese (VR)

Tel. +39 0464 48.50.50
info@ctelift.com
www.ctelift.com



UNI EN ISO 9001:2008 IT 61659