

CTETRACCESS 160

- ↑ 15,8 m
- 7,5 m
- 👤 250 kg

Excellent combination of performances and versatility.

Compactness.
Performances.
Technology.



CTE TRACCESS 160

15,8 m of working height, 7,5 m of outreach and the extraordinary capacity of 250 kg in the whole working area combined with CAN BUS system make this model a milestone in its category.



250 kg unrestricted working area



Winch with 230 Kg lifting capacity



Doorway access



Different power sources available



watch the video

TECHNICAL DATA

- » Articulated boom (two elements) + telescopic boom (main boom + 1 extension) + jib
- » Sigma boom articulation
- » $\pm 180^\circ$ non continuous turret rotation
- » Smooth proportional simultaneous controls with acceleration and deceleration ramps
- » 2.4 GHz remote control with integrated display, home function, stabilization and start/stop
- » Quick release aluminum basket 1400x700x1100mm with wheels
- » 90° right + 90° left hydraulic basket rotation
- » Master/Slave basket leveling with electronic adjustment from remote controller
- » Engine start and stop controls from basket
- » All aluminium basket 1400x700x1100mm
- » Dual drive speed
- » Extending width track
- » CAN BUS electronic management system
- » 12V electric system
- » Load cell
- » N° 4 hydraulic outriggers with ground pressure sensors
- » Hour meter
- » 230V AC EC electrical socket in the basket
- » Standard boom colours blue (RAL 5017) or white (RAL 9003)
- » Gradeability approximately 25%
- » Drive speed max 1,5 Km /h
- » 230V 2,2 KW auxiliary engine
- » Rise and drive jib functionality
- » Automatic stabilization

ENGINES

- » Honda 11 Hp petrol engine
- » Lombardini diesel engine
- » 48V Lithium battery

STRENX™
PERFORMANCE STEEL

IPAF



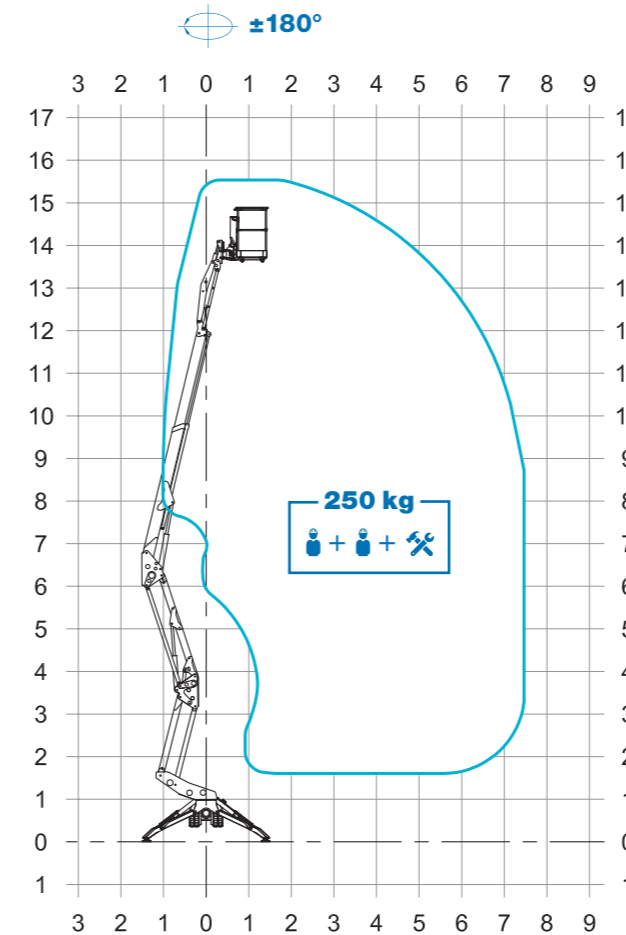
WHEELED, EASY-REMOVABLE BASKET

GRAPHIC DISPLAY

WIRELESS REMOTE CONTROL

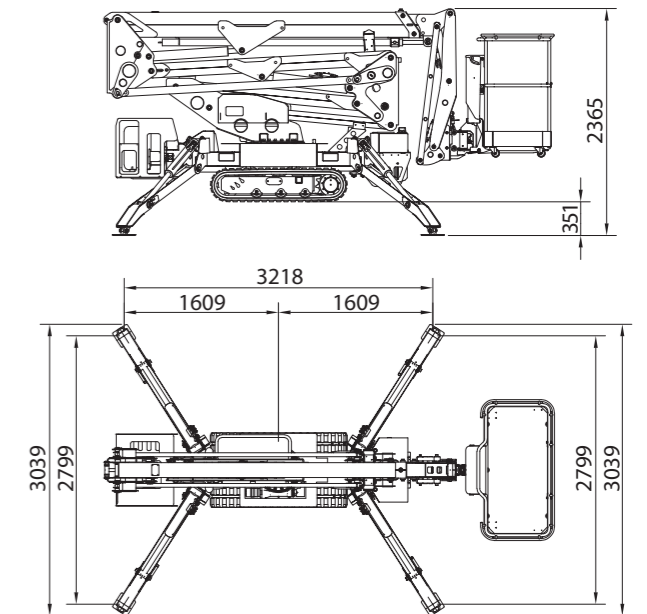
RISE AND DRIVE JIB FUNCTIONALITY

WORKING ENVELOPE

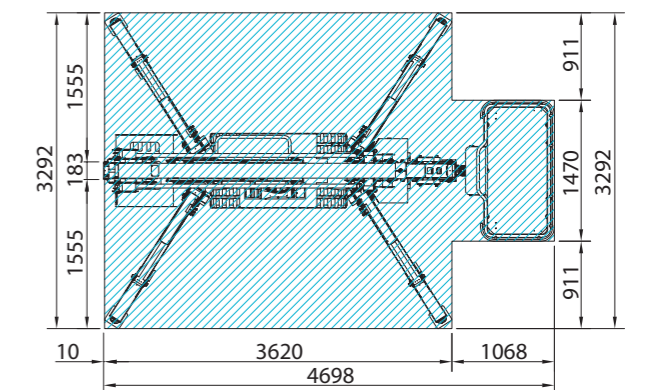


DIMENSIONS

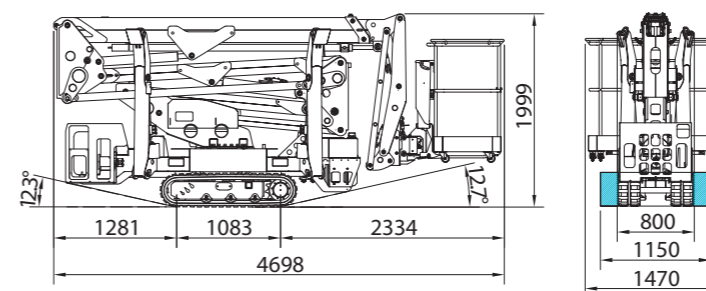
MIN



MAX



OUTRIGGER FOOTPRINT

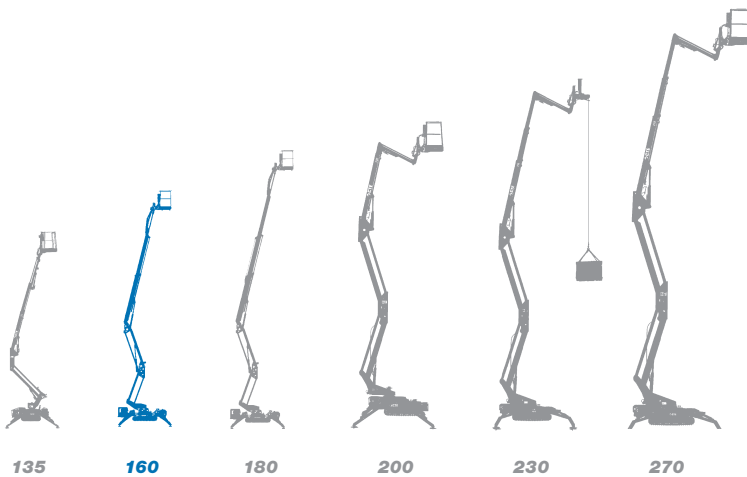


- 15,8* m
- 1,4 x 0,7 x 1,1 m
- 7,5* m
- 2.400 kg
- 250 kg
- 13,8* m

* outreach and height max values and repeatability can change within $\pm 3\%$ due to manufacturing variation and working condition.



Track-mounted range from 13 m to 27 m



- ★ Most versatile boom configuration
- ★ Most compact machines in class
- ★ Clean top boom
- ★ Friendly to use intuitive controls
- ★ Easy maintenance
- ★ Excellent boom rigidity during operation
- ★ Versatility of engines and versions



We are CTE, one of the largest european groups in the field of lifting people and handling of material.



After sales assistance



Service spare parts



Scheduled maintenance



On-site assistance



Authorized workshops

Efficient services, innovative technical solutions, timely assistance, professional advice and training: 'Work Becomes Easy' is all this. A style, a philosophy at the heart of which are our customers, their safety, their quality of life. For this reason there is a group in CTE united by ideas, motivation and passion to simplify the work of companies active in the lifting of people and objects.



CTE s.p.a.
Via Caproni, 7
38068 Rovereto (TN)

Productive unit
Loc. Terramatta, 5
37010 Rivoli Veronese (VR)

Tel. +39 0464 48.50.50
info@ctelift.com
www.ctelift.com



UNI EN ISO 9001:2008 IT 61659