




# **CTEMP 24 C**

-  **24 m**
-  **14 m**
-  **250 kg**

## Versatility meets the best technology.

**Innovation.  
Productivity.  
Compactness.**



# CTEMP 24 C

When versatility meets the best technology,  
to make your work easier.  
This is the CTE philosophy.  
And with the addition of S<sup>3</sup> EVO to get  
maximum safety!



S<sup>3</sup> EVO



UP&OVER



Compactness



Jib

## TECHNICAL DATA

- » Double telescopic + jib
- » Turret rotation  $\pm 300^\circ$  not continuous
- » S<sup>3</sup> EVO interface with indication of allowed maneuvers
- » Graphic display for anomalies and diagnostic
- » Engine start / stop from both control stations: from the ground and from the basket
- » Hydraulic rotation of the basket  $90^\circ$  right +  $90^\circ$  left
- » Electronic leveling of the basket
- » Non-slip platform
- » Aluminum basket
- » 4 hydraulic outriggers with ground pressure sensors
- » Front outriggers with hydraulic extension to operate narrow jacked and fully extended
- » Variable stabilisation managed by S<sup>3</sup> EVO
- » CAN BUS electronic management system
- » Load cell for basket capacity control
- » Hydraulic system powered by a gear pump installed on the PTO of the vehicle with electric management
- » Buzzer indicating PTO engaged
- » Hour meter
- » 230 V AC CE electrical socket in the basket and overcurrent protection
- » Home function
- » Smart auto opening function
- » Possibility of customized function



watch the video

**STRENX™**  
PERFORMANCE STEEL

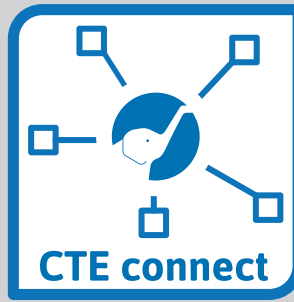
**IPAF**



MAX 250 KG OF CAPACITY,  
TOTAL CLEARANCE PLATFORM



INTUITIVE  
USER EXPERIENCE

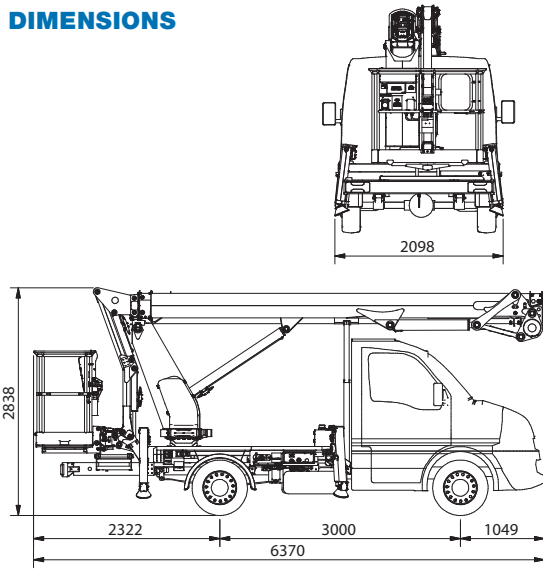


CTE CONNECT  
SYSTEM INTEGRATED

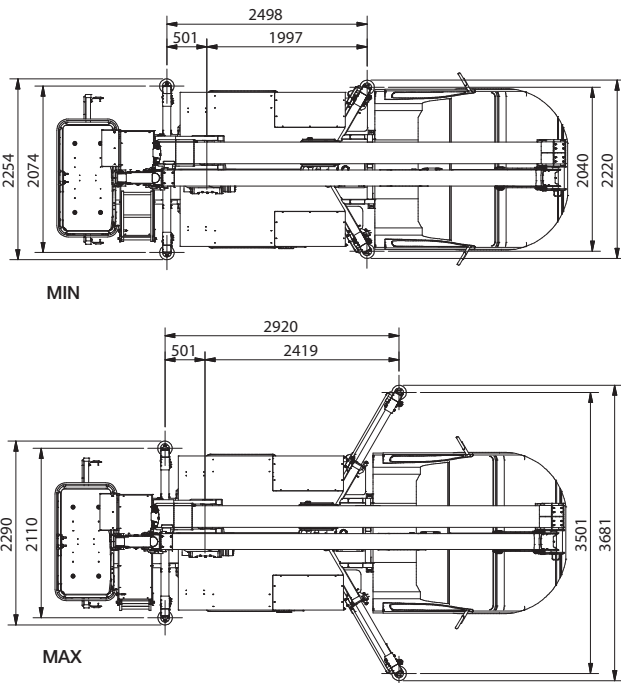


DIAGNOSTIC AND  
SERVICE DISPLAY

## DIMENSIONS



## OUTRIGGER FOOTPRINT

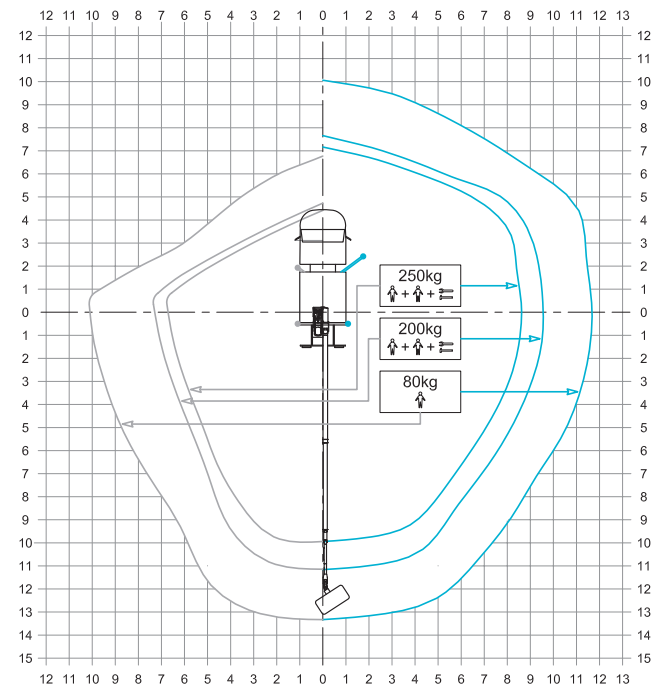
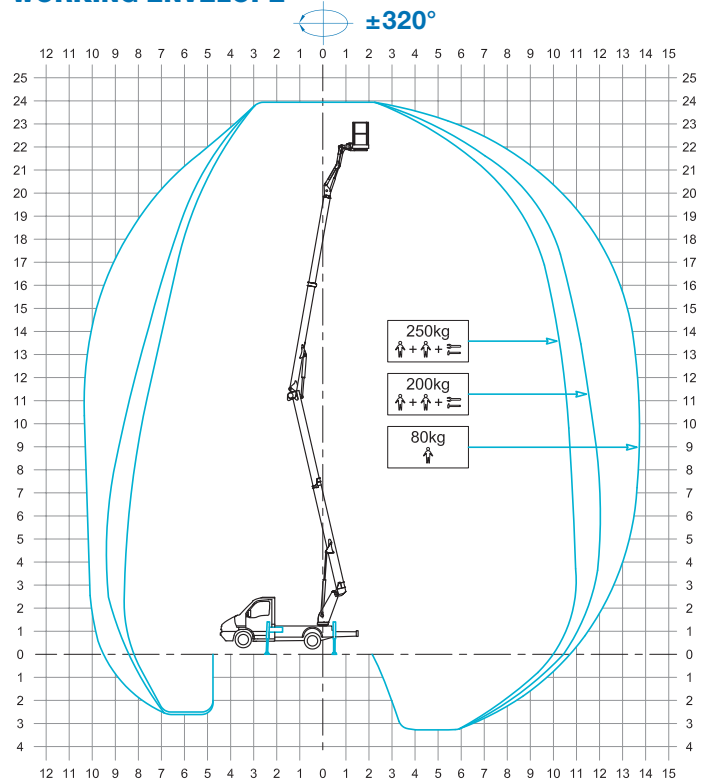


**24\* m** **1,4 x 0,7 x 1,1 m**

**14\* m** **GVW min 3.500 kg**

**250 kg** **22\* m**

## WORKING ENVELOPE

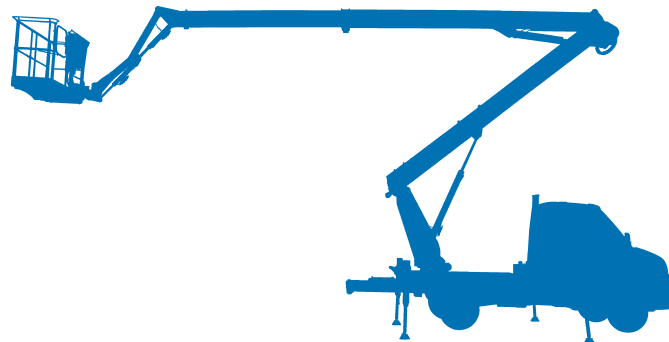


\* outreach and height max values and repeatability can change within  $\pm 3\%$  due to manufacturing variation and working condition.



Truck-mounted platforms range fro 20 to 32 m

- ★ Versatility
- ★ Excellent stability in use
- ★ Innovative control system
- ★ Intuitive controls
- ★ Clean design
- ★ Ease of maintenance



We are CTE, one of the largest european groups in the field of lifting people and handling of material.



After sales assistance



Service spare parts



Scheduled maintenance



On-site assistance



Authorized workshops

Efficient services, innovative technical solutions, timely assistance, professional advice and training: 'Work Becomes Easy' is all this. A style, a philosophy at the heart of which are our customers, their safety, their quality of life. For this reason there is a group in CTE united by ideas, motivation and passion to simplify the work of companies active in the lifting of people and objects.



CTE s.p.a.  
Via Caproni, 7  
38068 Rovereto (TN)

Factory  
Loc. Terramatta, 5  
37010 Rivoli Veronese (VR)

Tel. +39 0464 48.50.50  
info@ctelift.com  
www.ctelift.com



UNI EN ISO 9001:2008 IT 61659