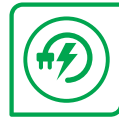


The first  
**100% electric**  
truck-mounted  
platform  
**on 3.5 tons**



A green and silent revolution, by CTE,  
which opens up new business opportunities  
in the aerial work industry.

# CTE MP 20 Ev



**100%  
Electric**

- ✔ Zero emission
- ✔ Zero noise
- ✔ Full productivity



**Compact**



**S³ EVO**



**3,5 t**

## VEHICLE TECHNICAL DATA

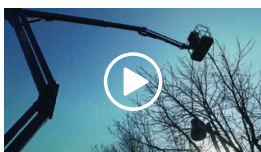
- » Designed, engineered and manufactured in Italy with ECarry-Green G Technology
- » Premium Components, reliable and easy to source for replacement, with FULL LED Technology
- » 35 KWh Webasto battery, Li-ion NMC, R100 certified
- » Range up to 100 Km (WLTP)\*
- » Portable charging cable up to 7.5 KW with multiplug adapter, to recharge and work in any condition and industrial plug availability, 220/380V
- » Comfortable and ergonomic cab, with 380 mm ground clearance, for easy access
- » Panoramic wind shield and rear view mirrors
- » Ergonomic and efficiently designed cab
- » Heater, electric windows, adjustable power steering wheel for maximum operating comfort
- » 7.5 KW Electric Power Take Off, coupled to a 380V motor and a Smart inverter, for an efficient management of the working cycle of the MEWP
- » Service and Spare Parts guaranteed nationwide

\* Only driving without platform use

## AERIAL PLATFORM TECHNICAL DATA

- » Designed, engineered and manufactured in Italy with CTE and SSAB Technology
- » Componentistica Premium, affidabile e reperibile
- » Premium Components, reliable and easy to source for replacement
- » Ground Console with Wireless Remote and integrated display for wires free operations
- » Basket console with the same Look-n-Feel of the ground console, integrated display, for easy learning and familiarization for the operator
- » State of the Art CTE S3 EVO control system
- » 250 Kg Nominal Capacity
- » Electronic self levelling basket
- » Automatic stabilization from ground and basket console
- » Stepless extendable front outriggers
- » Option to work without rear outriggers for quick limited height jobs
- » Auto opening and auto stow
- » Range up to 70 km (WLTP) and 25 working cycles\*
- » Possibility of working in Battery Mode Only or in Plug-In mode, connected to the electric grid (220V/380V) using the charging cable
- » CTE Connect available for remote monitoring and diagnostics, with the option for fleet management and preventive maintenance

\* Range and working cycles are provided as examples; driving range and working cycle may vary depending on working conditions



watch the video



**20\* m**



**1,4 x 0,7 x 1,1 m**



**13\* m**



**3.500 kg**



**250 kg**



**18\* m**

**STRENX™**  
PERFORMANCE STEEL



\* outreach and height max values and repeatability can change within ± 3% due to manufacturing variation and working condition.



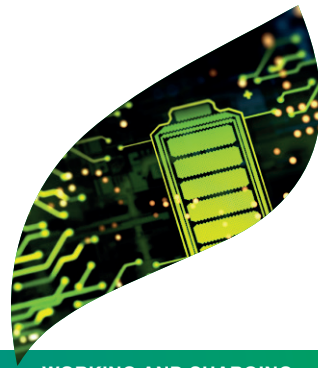
RANGE UP TO 100 KM



ACCESS TO AREAS WITH LIMITED TRAFFIC

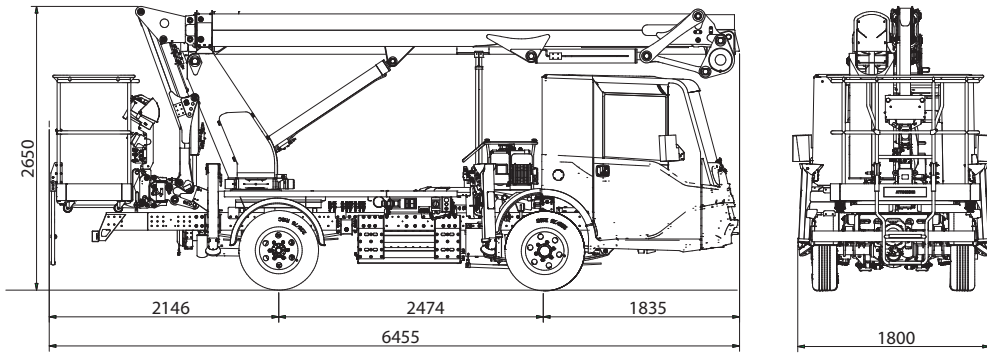


QUIET, FOR NIGHT WORK

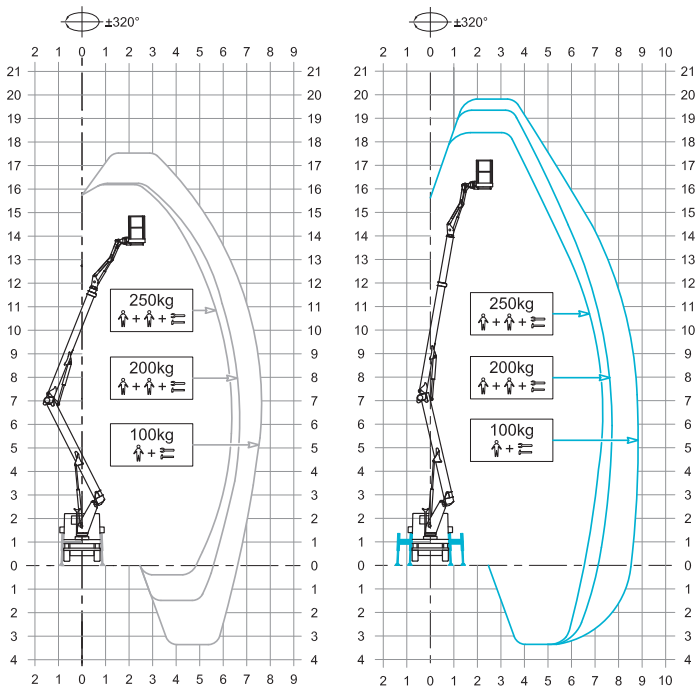


WORKING AND CHARGING AT THE SAME TIME

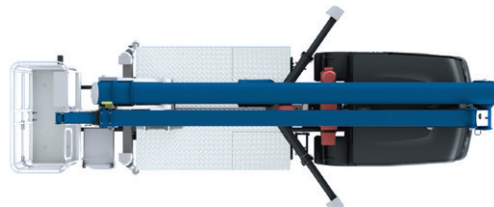
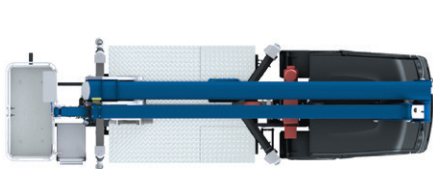
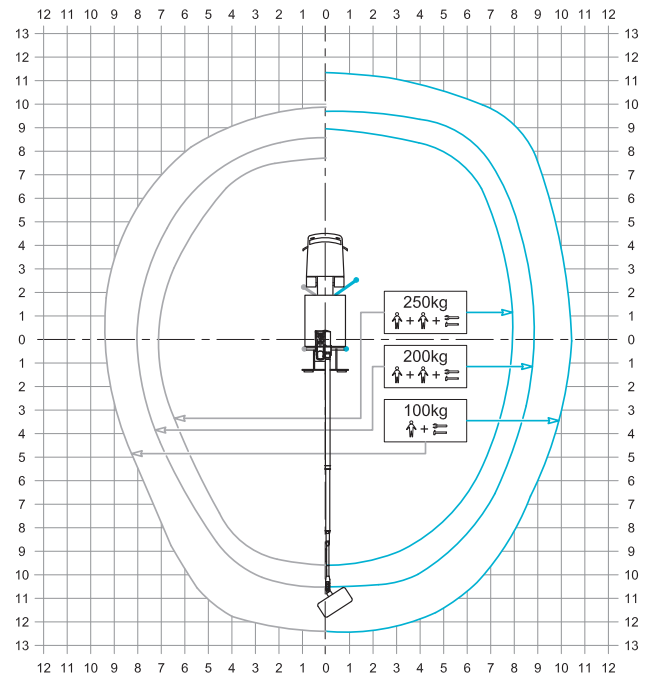
## DIMENSIONS



## WORKING ENVELOPE



## OUTRIGGER FOOTPRINT



## A new challenge. For us and for the world.

At CTE we have been providing innovative solutions since 1981 to make working at height simple and safe, and now more than ever our company recognizes the need to offer sustainable technologies.

## Always innovate.

In over 40 years in the lifting industry, we have continuously introduced innovations, patents and world premieres. Today, thanks to the synergy with electric vehicle manufacturers, it is born a new solution capable of meeting the environmental sustainability requirements required by the most recent objectives defined by the international community.

We want to do our part to offer a better world to new generations.



**We are CTE, one of the largest  
european groups in the field of  
lifting people and handling of material.**



**After sales  
assistance**



**Service  
spare parts**



**Scheduled  
maintenance**



**On-site  
assistance**



**Authorized  
workshops**

Efficient services, innovative technical solutions, timely assistance, professional advice and training: 'Work Becomes Easy' is all this. A style, a philosophy at the heart of which are our customers, their safety, their quality of life. For this reason there is a group in CTE united by ideas, motivation and passion to simplify the work of companies active in the lifting of people and objects.