

# SPECIFICATION (PRELIMINARY)

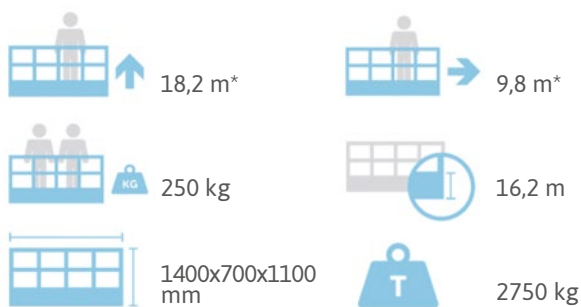
# TRACCESS 180

## TECHNICAL DATA

- Articulated boom (two elements)  
+ telescopic boom (main boom + 2 extension) + jib
- Sigma boom articulation
- $\pm 220^\circ$  non continuous turret rotation
- Smooth proportional simultaneous controls with acceleration and deceleration ramps
- 2.4 GHz remote control with integrated display, home function, stabilization and start/stop
- Quick release aluminum basket  
1400x700x1100mm with wheels
- $90^\circ$  right +  $90^\circ$  left hydraulic basket rotation
- Load cell
- Master/Slave basket leveling with electronic adjustment from remote controller
- Engine start and stop controls from basket
- All aluminium basket 1400x700x1100mm
- Dual drive speed
- Extending width track
- CAN BUS electronic management system
- 12V electric system
- N° 4 hydraulic outriggers with ground pressure sensors
- Hour meter
- 230V AC EC electrical socket in the basket
- Standard boom colours  
blue (RAL 5017) or white (RAL 9003)
- Gradeability approximately 25%
- Drive speed max 1,5 Km /h
- 230V 2,2 KW auxiliary engine
- Rise and drive jib functionality
- Automatic stabilization
- CE EN 280:2022 certification

## ENGINES

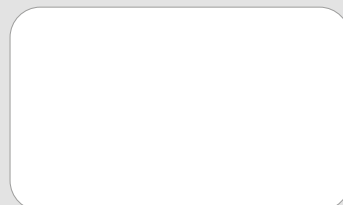
- **Honda 15 Hp petrol engine**



\* outreach and height max values and repeatability can change within  $\pm 3\%$  due to manufacturing variation and working condition.



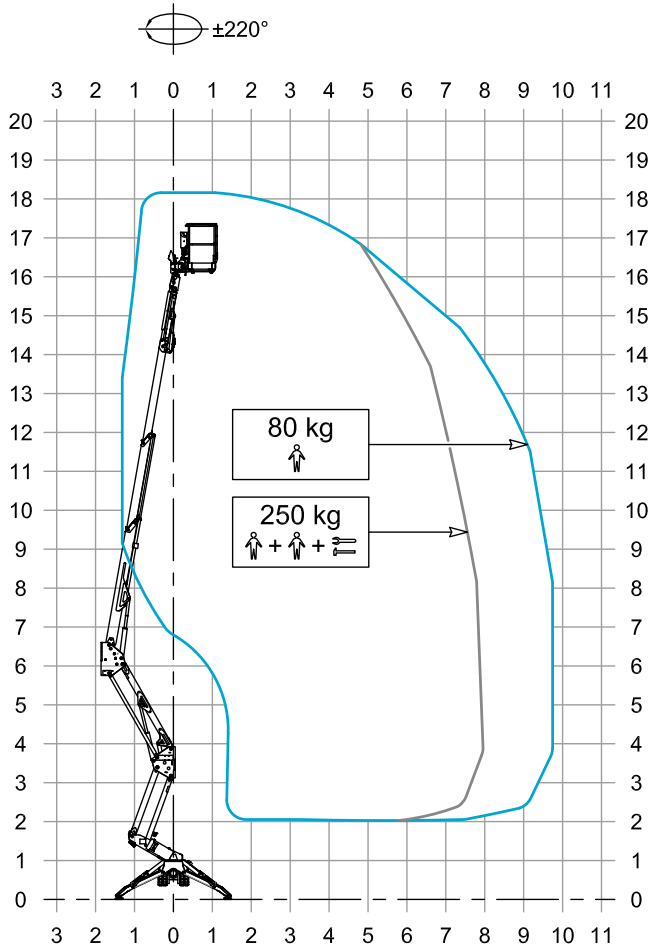
**CTE S.p.A.**  
Headquarter Via Caproni 7 - 38068 Rovereto (TN) IT  
Factory  
Loc. Terramatta 5 - 37010 Rivoli Veronese (VR) IT  
Via E. Fermi 2 - 37010 Affi (VR) IT  
**CTE UK Ltd** - Enderby Leicestershire - UK  
**CTE FRANCE Sas** - Saint Jean d'Ilac - FR  
**CTE NA Corp** - Willington - CT - USA  
Ph. +39 0464 485050 - info@ctelift.com - www.ctelift.com



# SPECIFICATION (PRELIMINARY)

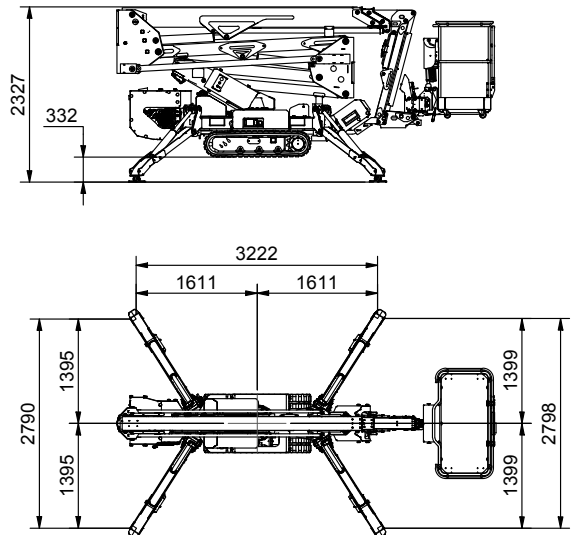
# TRACCESS 180

## WORKING ENVELOPE

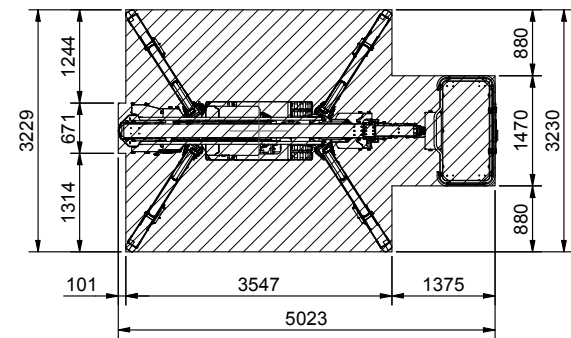


## OUTRIGGER FOOTPRINT

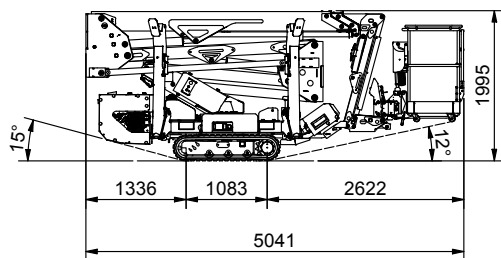
MIN



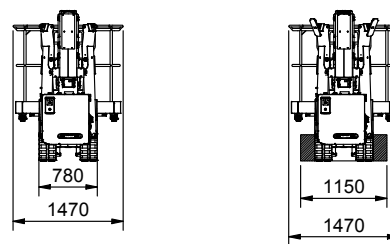
MAX



## DIMENSIONS



EXTENDED TRACK



Product specifications are subject to change without notice or obligation. Technical features and drawings in this brochure are for illustrative purposes only. TRACCESS 180 - ed. 11/23



**CTE S.p.A.**  
 Headquarter Via Caproni 7 - 38068 Rovereto (TN) IT  
 Factory  
 Loc. Terramatta 5 - 37010 Rivoli Veronese (VR) IT  
 Via E. Fermi 2 - 37010 Affi (VR) IT  
**CTE UK Ltd** - Enderby Leicestershire - UK  
**CTE FRANCE Sas** - Saint Jean d'Ilac - FR  
**CTE NA Corp** - Willington - CT - USA  
 Ph. +39 0464 485050 - info@ctelift.com - www.ctelift.com

